



GSTARCAD 2016

CAD DESIGN ENHANCED

Features Overview

GstarCAD 2016 Improves Your Design !

GstarCAD 2016 is aimed to save countless hours of design and rework through enhanced features, improving drafting capability through flexible operation methods upon a more optimized platform!

This version combines:

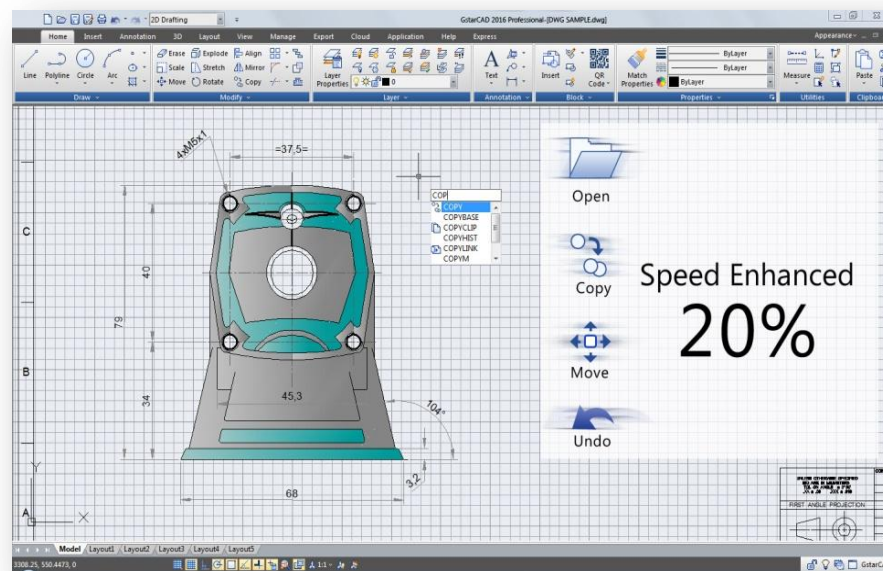
- “The power of its performance” regarding to common tasks speed and objects displaying processing.
- “Implementation” regarding to file format compatibility and 3D functionalities.
- “Ease of use” regarding to simplified drafting operation methods within commands.
- “New additions” regarding to known command options.

The Power of Its Performance

The performance plays an important role in every GstarCAD version, therefore Gstarsoft is making great effort in performance optimization continuously. On GstarCAD 2016, the performance is obviously enhanced in many aspects.

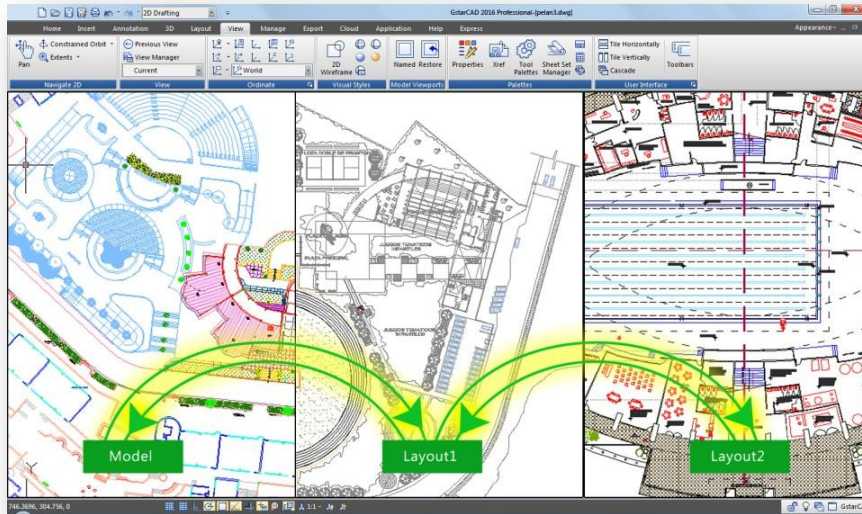
Common operations performance optimization

Common operation tasks including open, copy, move, undo, the performance speed has been enhanced 20%, and users entire drawing efficiency can be improved more than 10% if compare with previous version.



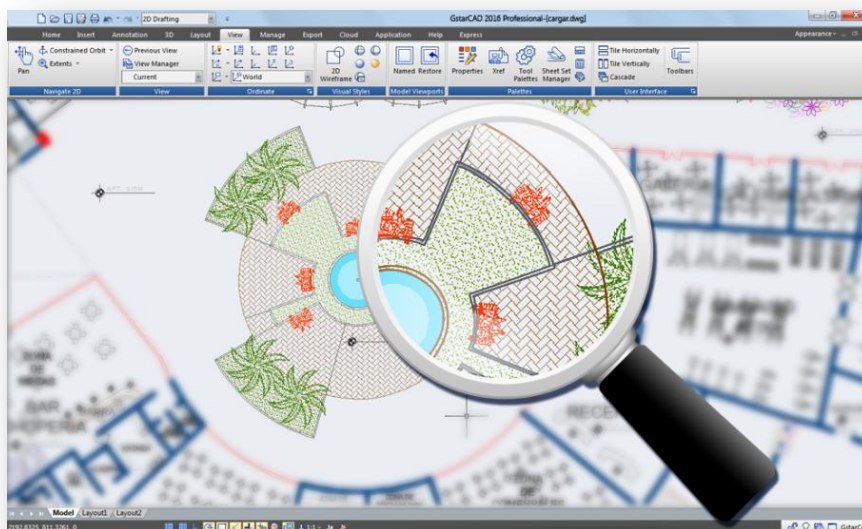
Layout space switching performance optimization

In previous versions many users got some time trouble when switching between model and layout space for big or complex drawings. Now GstarCAD 2016 focuses on layout space switching optimization, which reduces time considerably. Especially when switching layouts over twice is even much faster than before.



Objects visualization optimization

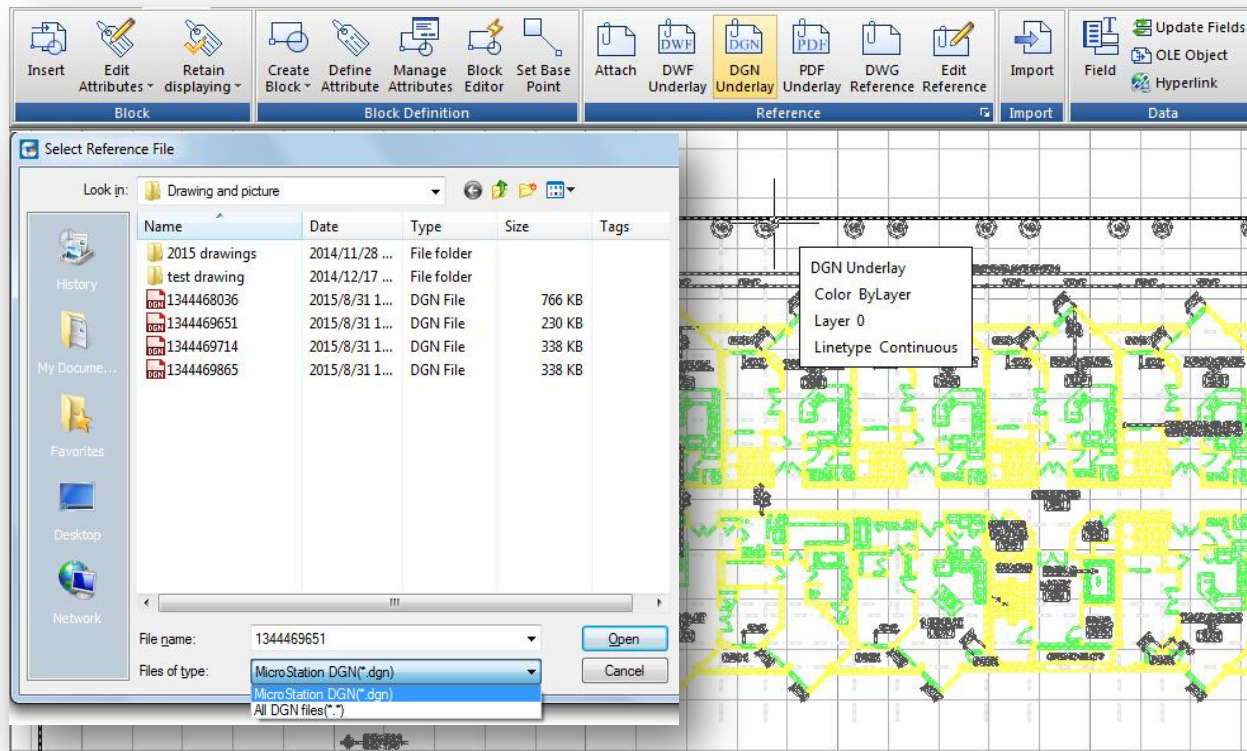
GstarCAD 2016 enhances object's visualization and the ability to snap points over these objects more accurate than previous version. Now when performing zoom in or zoom out, over circle(s) or arc(s), no matter how many of those objects you have created, these will keep the same shape (no contour edges displayed) thus you can snap points much accurately, enhancing drafting capability and better object visualization.



Implementation

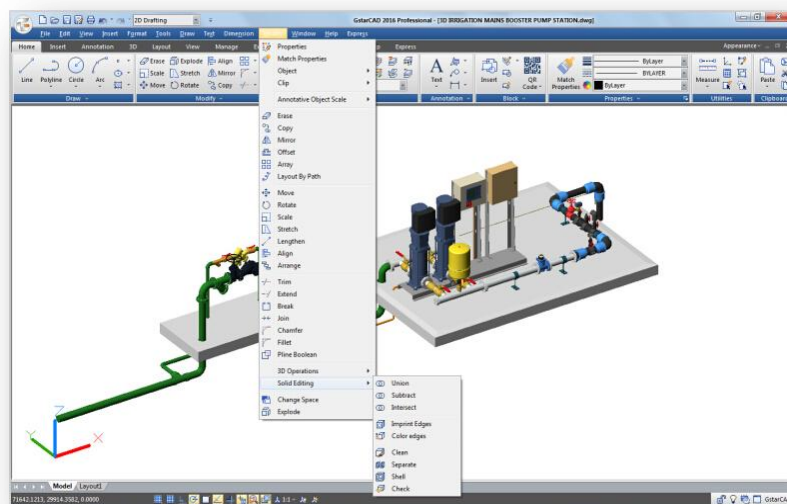
DGN File Format Implementation

GstarCAD 2016 continuously improves its compatibility. This version has implemented the full DGN files support and related commands such as DGNIMPORT, DGNATTACH, DGNADJUST, DGNMAPING, etc. Now you can import and attach as underlay a Microstation native format.



SOLIDEDIT Command Options Implementation

Now SOLIDEDIT command supports related 3D solid editing options like Union, Subtract, intersect, Imprint Edges, Color Edges ,etc.

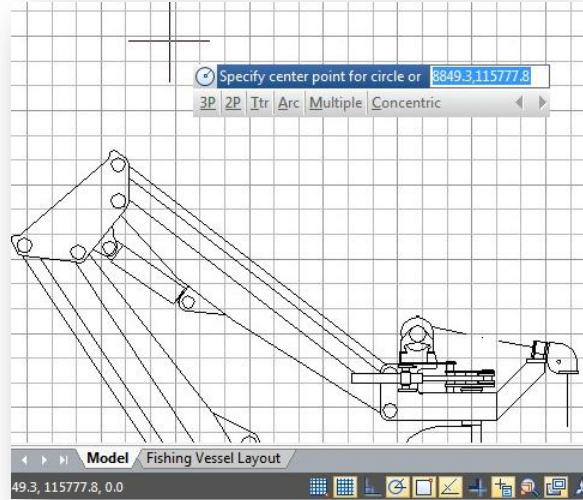


Ease of Use

Drafting Settings (New Visuals In Dynamic Input)

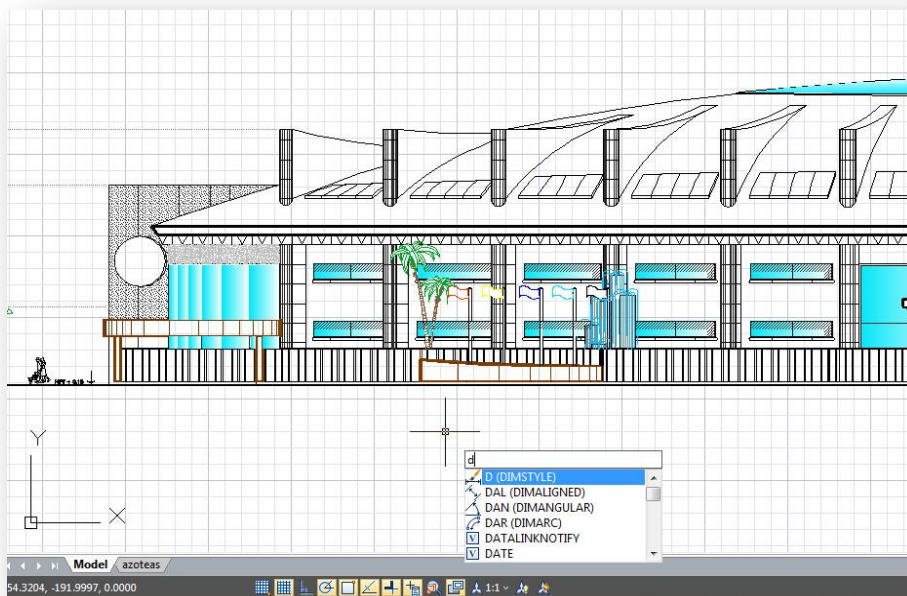
The traditional dynamic input has been improved, so now the dynamic input achieves the command line integration which means a great benefit by gaining more workspace and less eyes concentration.

Now the dynamic input in GstarCAD 2016 displays all options of a command and could select them in different methods. Users no longer need the command line either floated or docked, gaining more workspace to get wider viewing of the drawing and the most important, users will focus directly at the right spot of the drawing avoiding eyes concentration at command line.



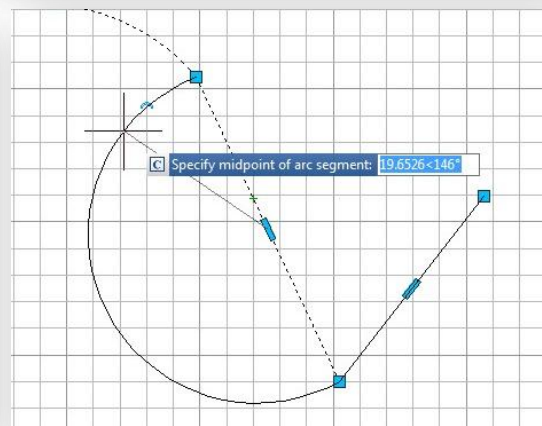
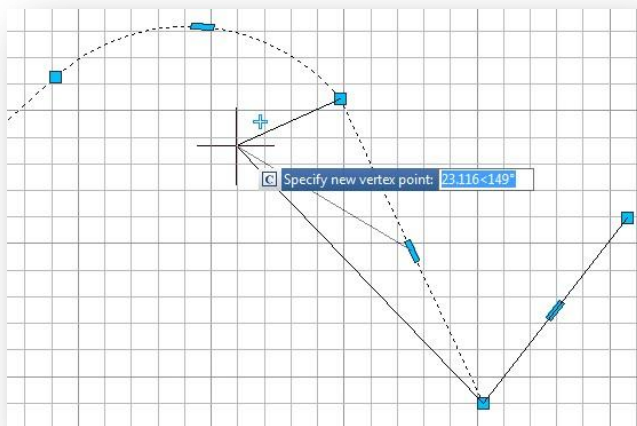
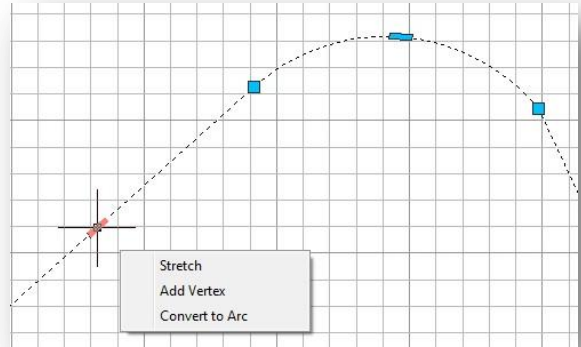
Drafting Settings (Auto Complete Command Entry Enhancement)

In addition to dynamic input enhancement, now the auto complete command entry has a light enhancement regarding to command icon display. When type a command using the dynamic input, it displays a list of all the commands whose prefix matches what you've typed plus it will display all their icons making easier to recognize them at glance.



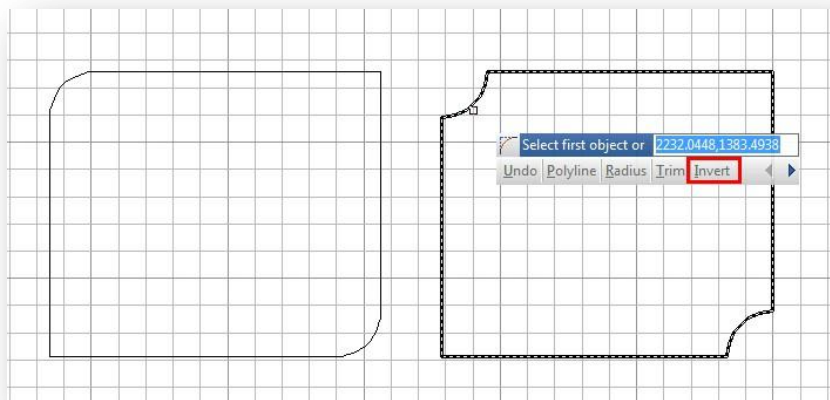
Object Grip Edition (Polyline Enhancement)

Polyline objects in GstarCAD 2016 now support multifunctional options. The available functions (Stretch, Add Vertex, and Convert to Arc) can be seen by hovering over a grip, and you can choose an option directly from the context menu that appears. You can cycle through the available functions by pressing CTRL, or choosing one of the options from the right-click menu. Icons next to the cursor indicate the active function.



FILLET Command Enhancement

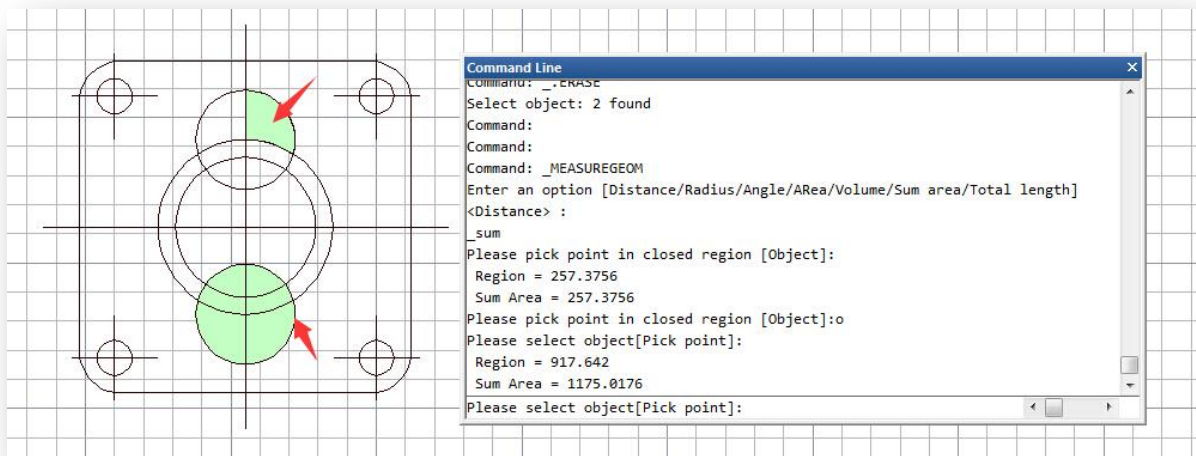
Invert Fillet has a very wide range of usage particularly in construction and furniture industry. The FILLET command now offers a new option called *Invert*. You can create a reverse fillet by this option.



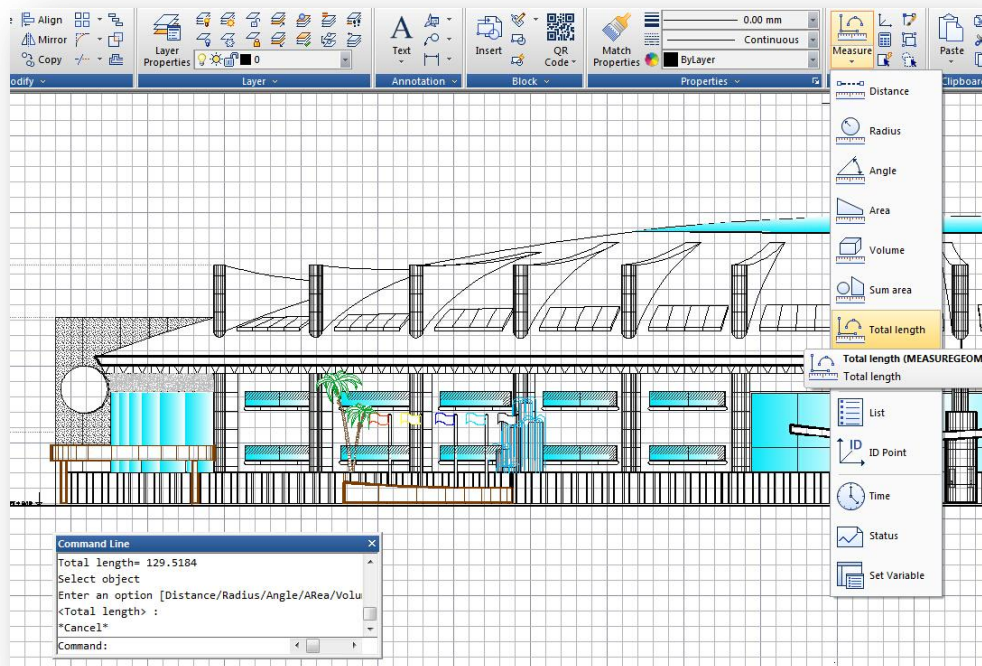
MEASUREGEOM Command Enhancement

MEASUREGEOM command is more powerful in GstarCAD 2016, not only adds the missing options such as measure radius, measure angle, and measure volume, but also sum area and total length.

Sum area: Not only can calculate the area of a closed object but also can calculate a closed region area. If there are multiple objects need to be selected, window selection is available.



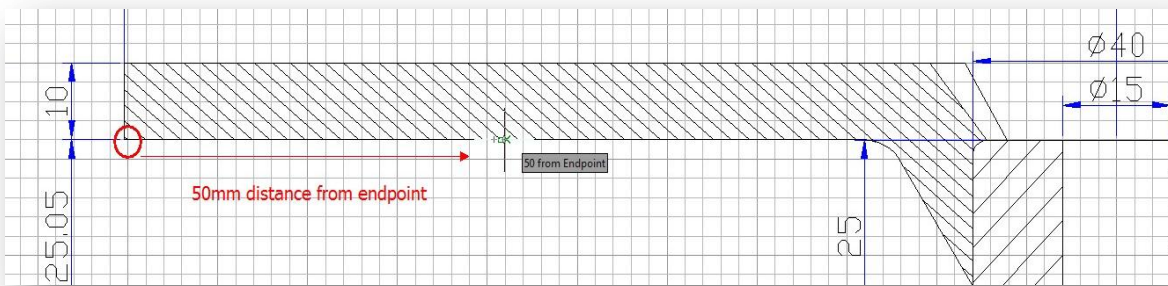
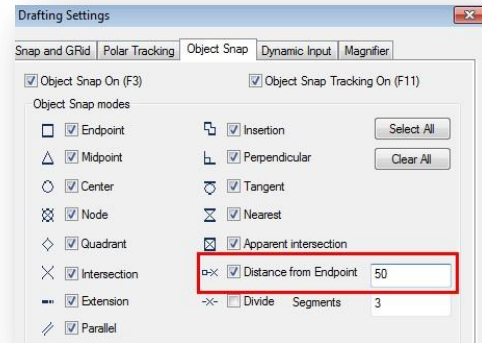
Total length: Calculates the object length and total length associated with selected arc, circle, polyline segments or line objects. you can either select the single object by click or select multiple objects with window selection.



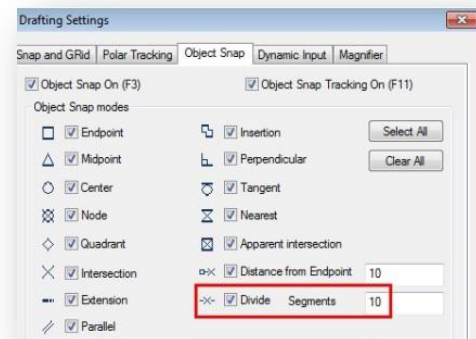
New Additions

Drafting Settings (Object Snap Options Added)

Now within Object Snap tab, you can find a new added option called *Distance from Endpoint*. This option allows snap a certain distance from any endpoint of objects like line, arc, spline, pline, ellipse arc, mline and any other lines. As long as you pass the cursor over an object from its endpoints, you will see a green snap point at accurate distance.

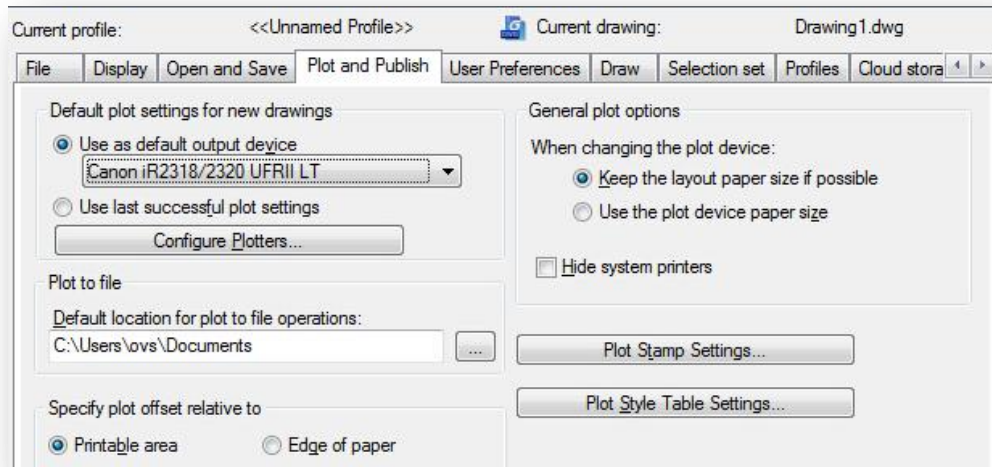


And within Object Snap tab, you can find a new added option called *Divide Segments*. This option allows snap the divided segment points of objects like line, arc, spline, pline, ellipse arc, mline and any other lines. Before, if you want to find the divide point, first you need to generate the divided points object, then snap those points to draw. Now as long as you pass the cursor over an object mentioned above, you will see a green snap point at accurate distance.



Options Dialog Box (Plot and Publish Tab Addition)

Now the Options dialog box supports a new tab (Plot and Publish). This tab helps users to control options related to plotting and publishing.



About GstarCAD 2016

GstarCAD 2016, the CAD platform solution is aimed to save countless hours of design and rework through enhanced features which boost drafting capability through flexible operation methods upon a more optimized platform!

About Gstarsoft

Gstarsoft is the recognized leading of 2D/3D CAD software solutions for industries involving AEC, Civil Engineering, Mechanical, Manufacturing, Electrical, Electronics, GIS, Survey, Mapping, etc. With more than 20 years of proud history of technology innovation and practical application, Gstarsoft provides the most powerful and dwg compatible CAD software and solutions for customers and partners worldwide.