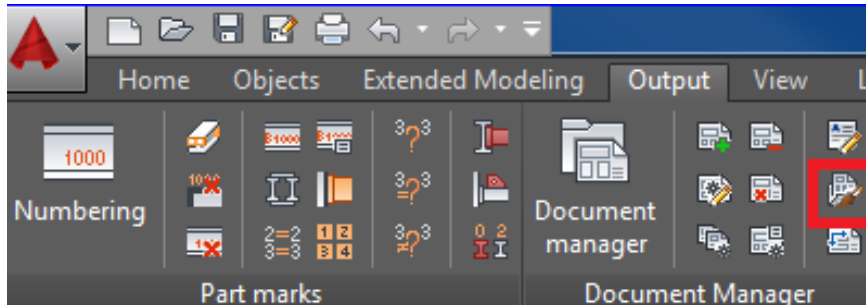


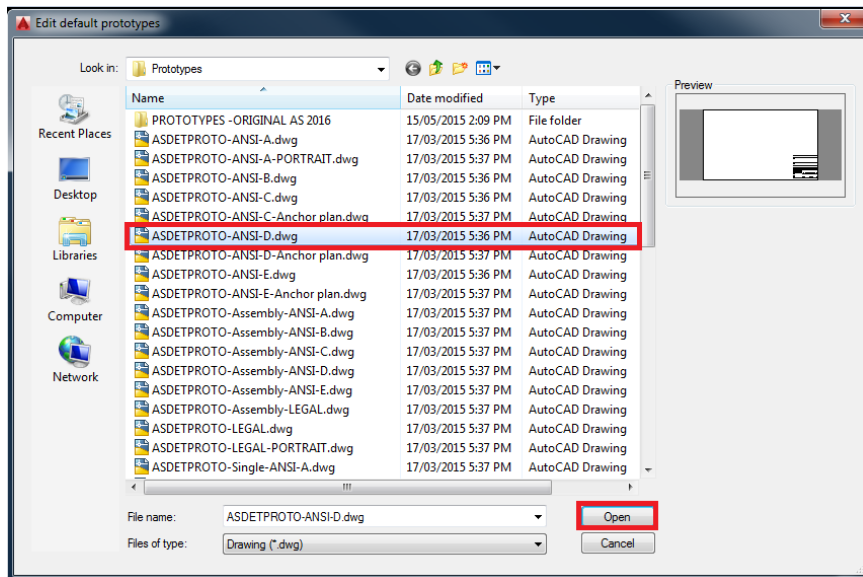
ADVANCE STEEL- 2016

PROTOTYPES – HOW TO MAP A NEW NAMED PROTOTYPE TO YOUR PROCESS MANAGER

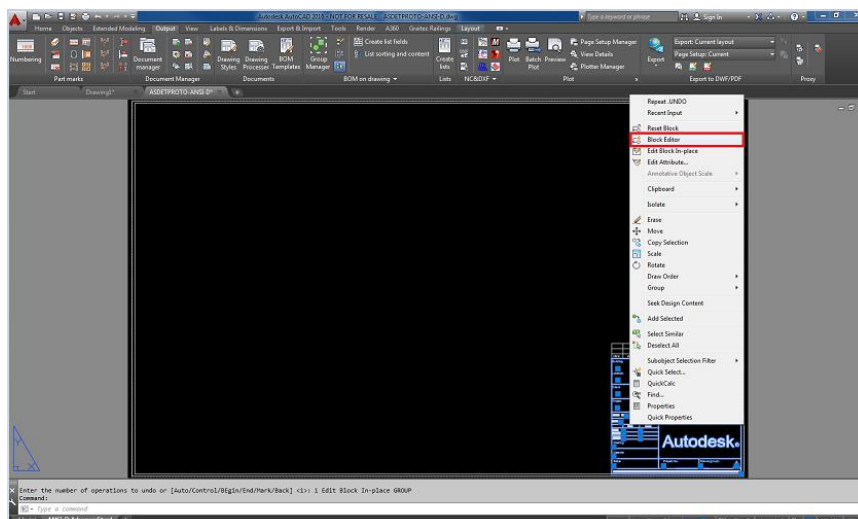
1. Select the **Edit Prototypes** icon from the **Output** tab on the **Document Manager** panel.



2. Open the **ASDETPROTO-ANSI-D.dwg**. Be sure to save a backup of the Prototypes folder.

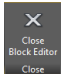


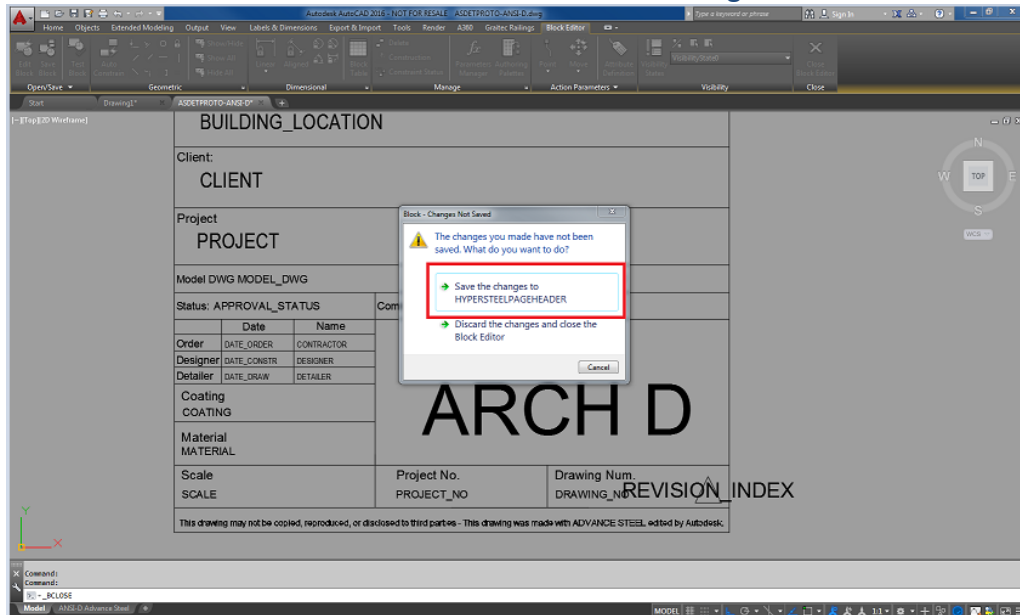
3. Right click on the **HYPERSTEELPAGEHEADER** and select **Block Editor**.



ADVANCE STEEL- 2016

Make your changes in the block editor. If you want Advance Steel to complete the value of an attribute with intelligent text, such as the Project data completed when creating a new Project file, you **must** use an attribute from the list of recognized tokens by Advance Steel.

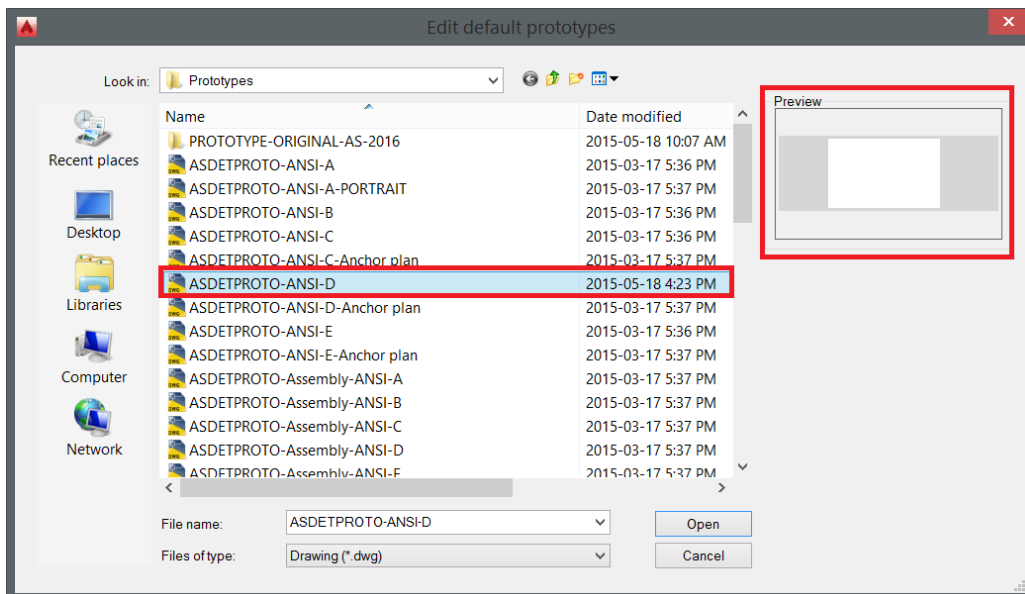
4. Close the block editor  when finished. You will be prompted to save the **HYPERSTEELPAGEHEADER**. Select save the changes to **HYPERSTEELPAGEHEADER**.



After saving the **HYPERSTEELPAGEHEADER** type **ATTSYNC** at the command line. Type "**S**" Select the **HYPERSTEELPAGEHEADER**. Type "**Y**" now **ATTSYNC** is completed.

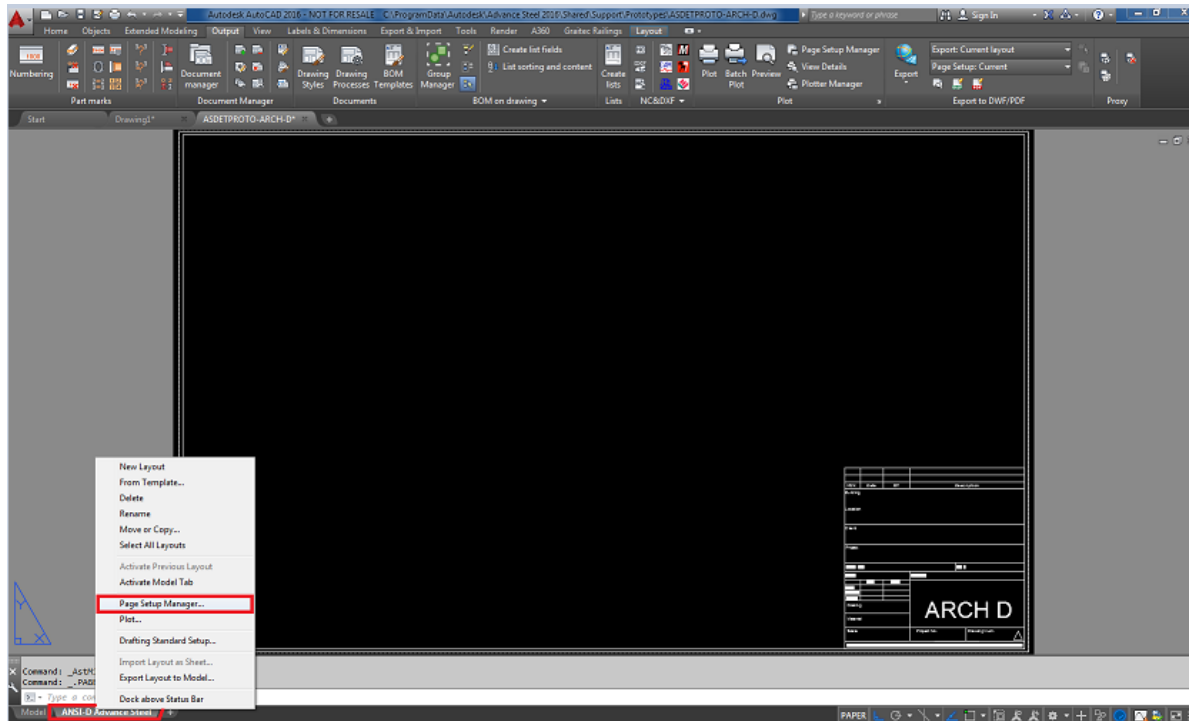
```
Command: ATTSYNC
Enter an option [?/Name/Select] <Select>: S
Select a block:
ATTSYNC block HYPERSTEELPAGEHEADER? [Yes/No] <Yes>: Y
ATTSYNC complete.
```

5. Save the (**ASDETPROTO ANSI-D.dwg**) in the **Prototypes** folder.



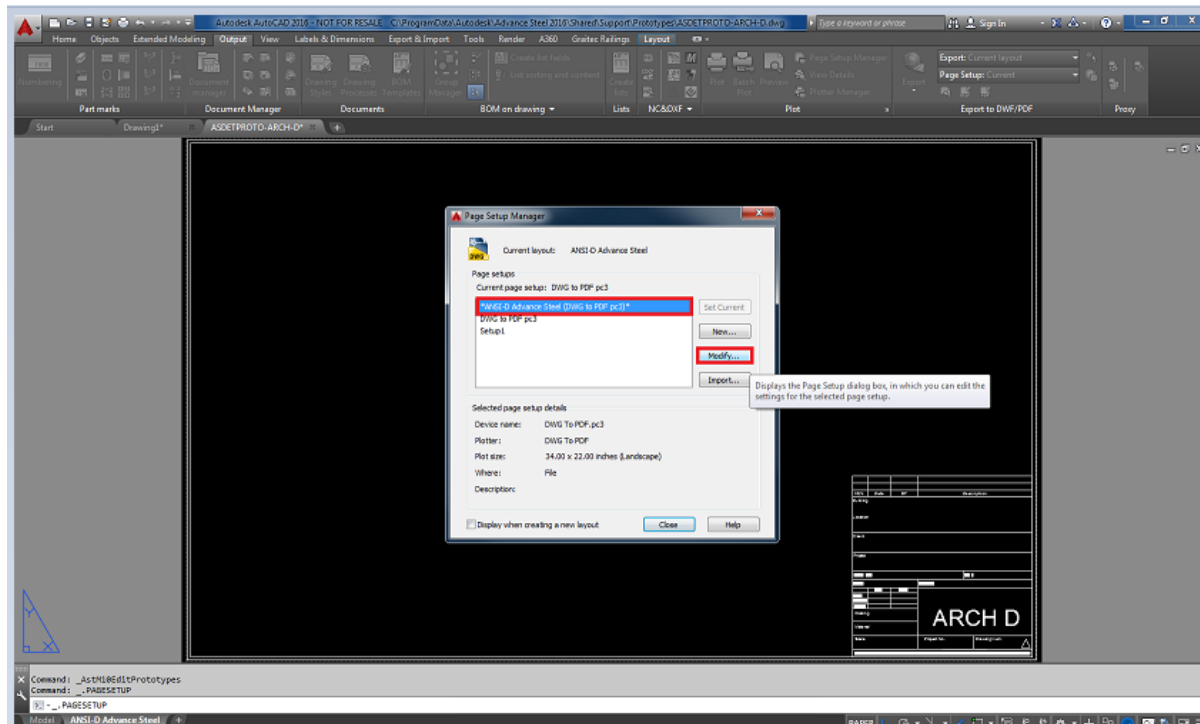
ADVANCE STEEL- 2016

6. Select the **ANSI-D Graitec Advance Steel** layout tab and right click.
7. Select **Page Setup Manager** from the contextual list that appears.



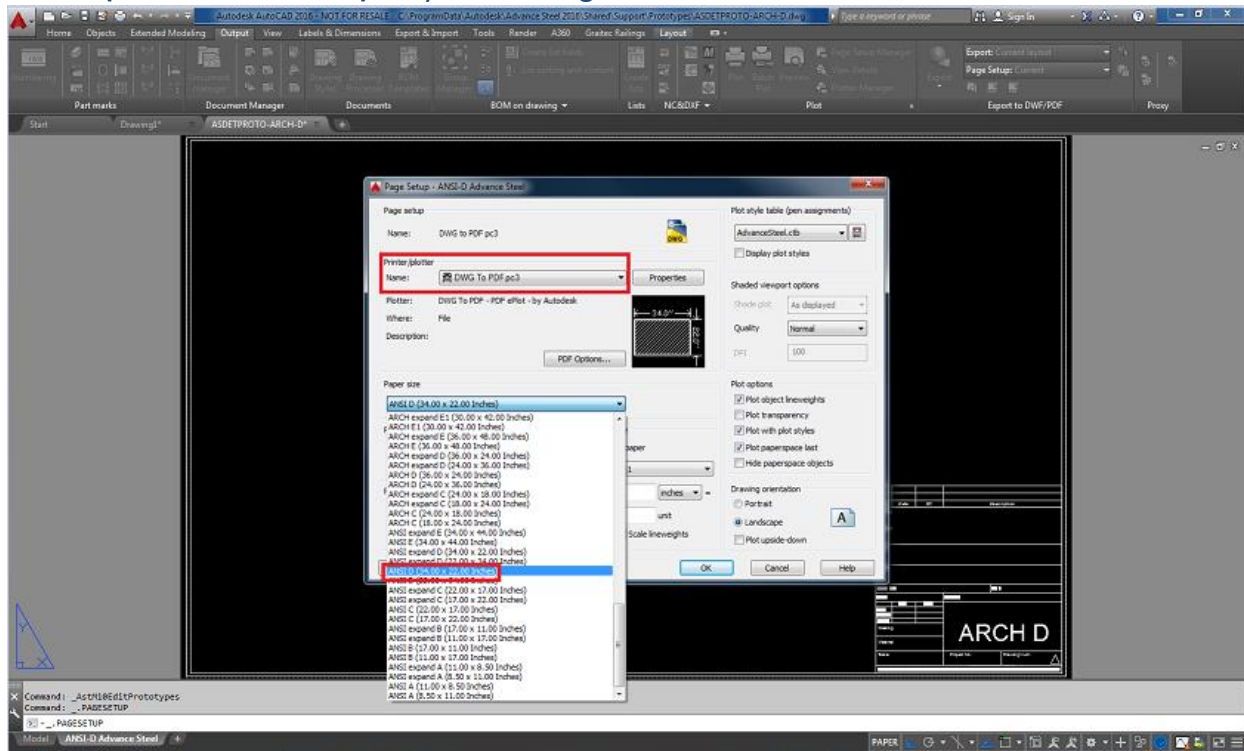
8. The **Page Setup Manager** dialog box is displayed.

9. Check **Modify** to modify the existing prototype

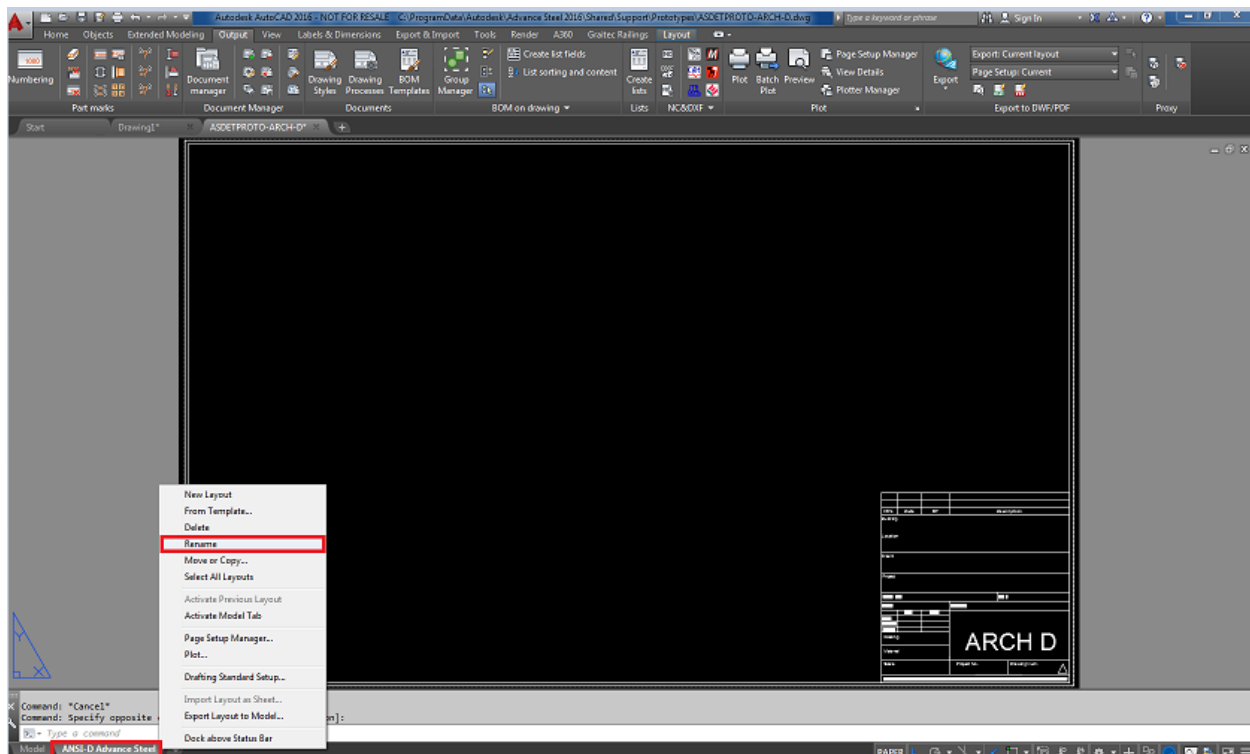


ADVANCE STEEL- 2016

10. Select the name of the **printer/Plotter**, and then the **Paper size ARCH D (36.00x24.00Inches)** for your drawings.



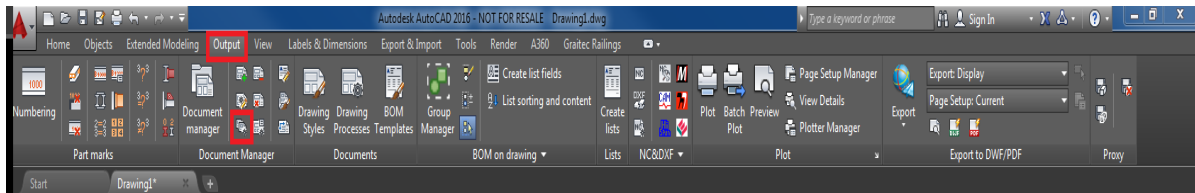
11. Select **OK**, then select **Close**. You can rename the layout tab to **ARCH-D Advance Steel**



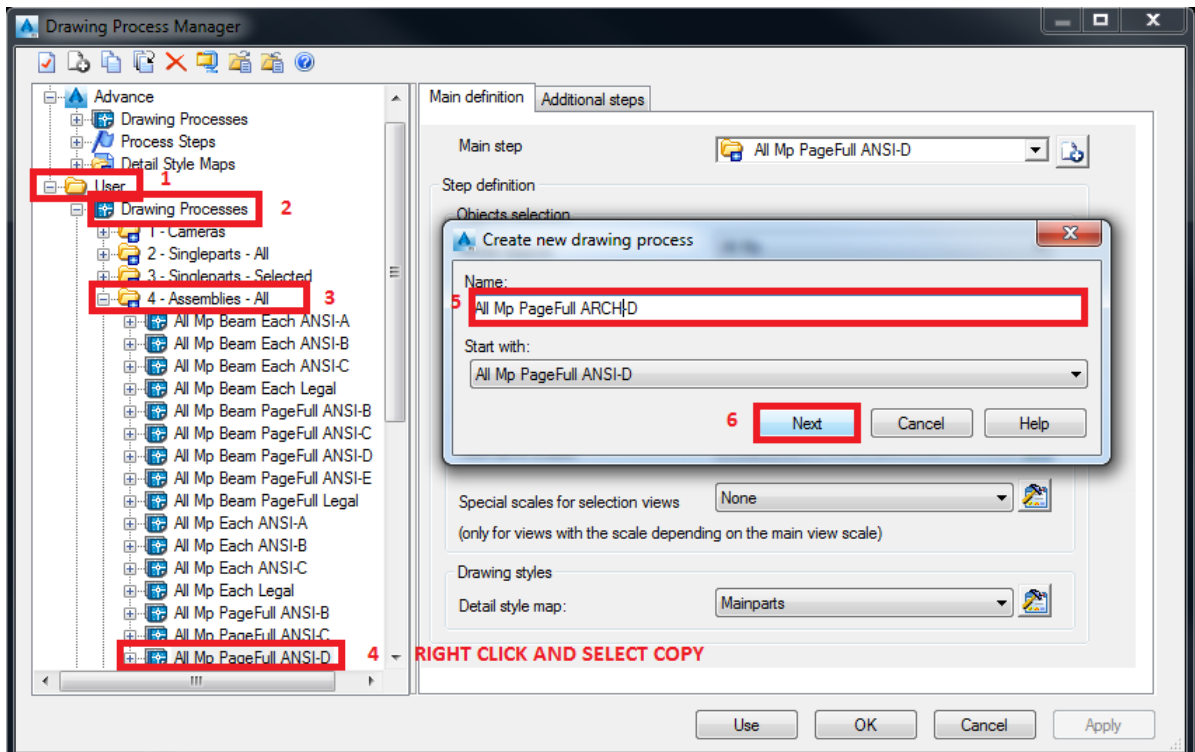
for clarity if you desire. Save the drawing then close it. It will be automatically saved to the **Prototypes** folder.

ADVANCE STEEL- 2016

12. Now open the **Drawing Process Manager** from the **Output** tab **Document Manager** panel.

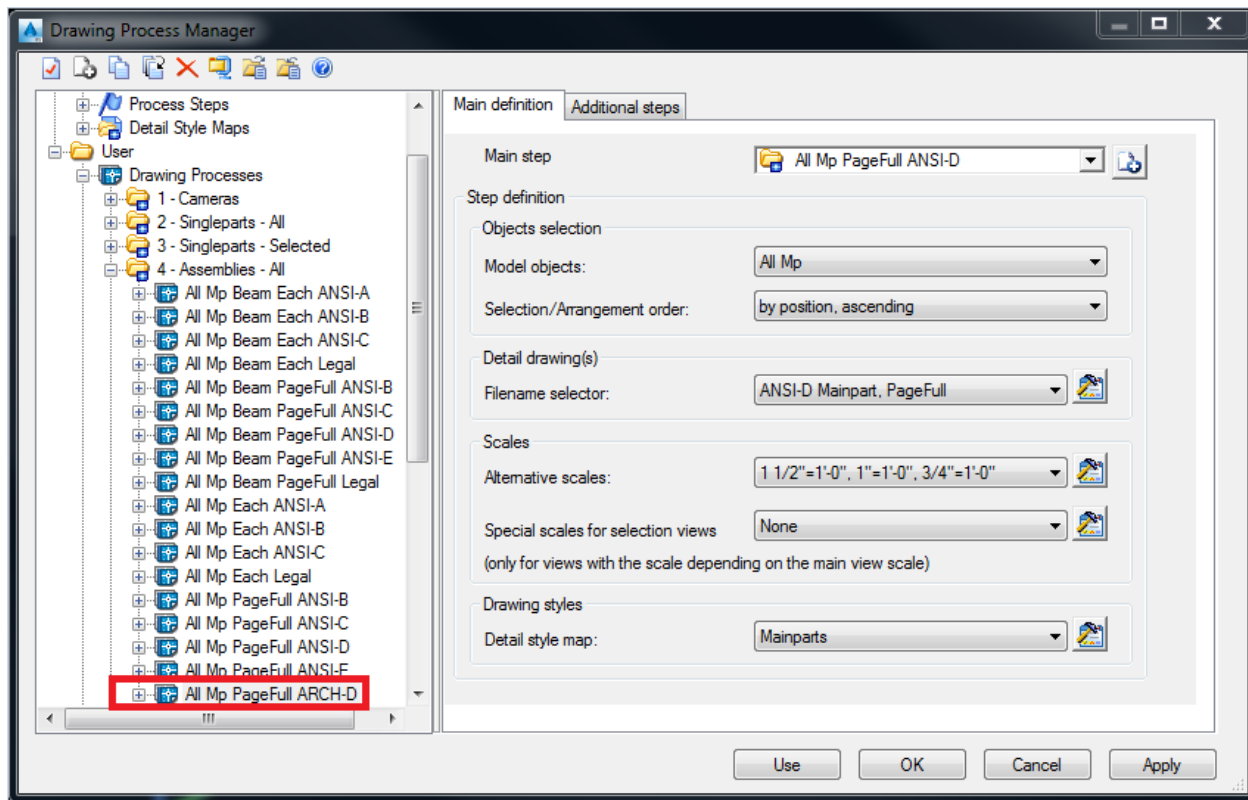


13. Select **User>Drawing Processes>Assemblies All> All Mp Page full ANSI-D** and right click and select **copy** to copy all the parameters of the existing information.
14. Rename it **All Mp Page full ARCH-D**.
15. Select **Next**. This will add a new style **All Mp Page full ARCH-D** to the list **4- Assemblies – All** in the left window.

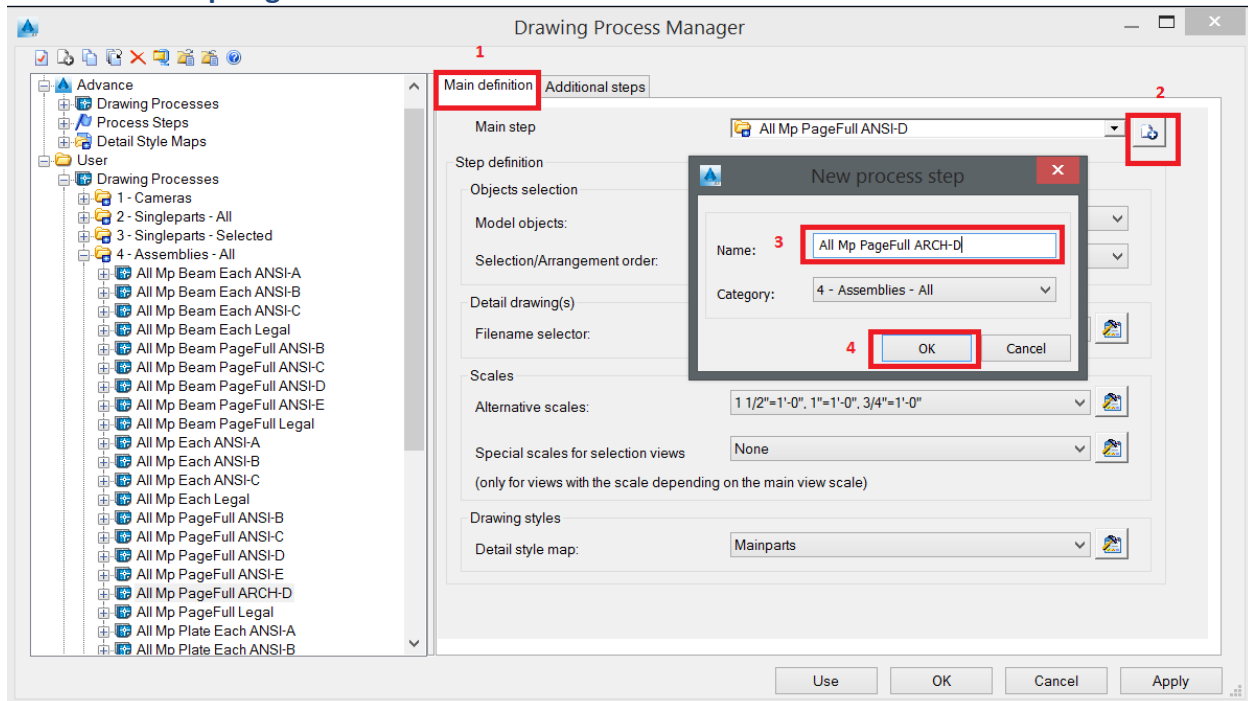


ADVANCE STEEL- 2016

This name is appended to the list in the left window.

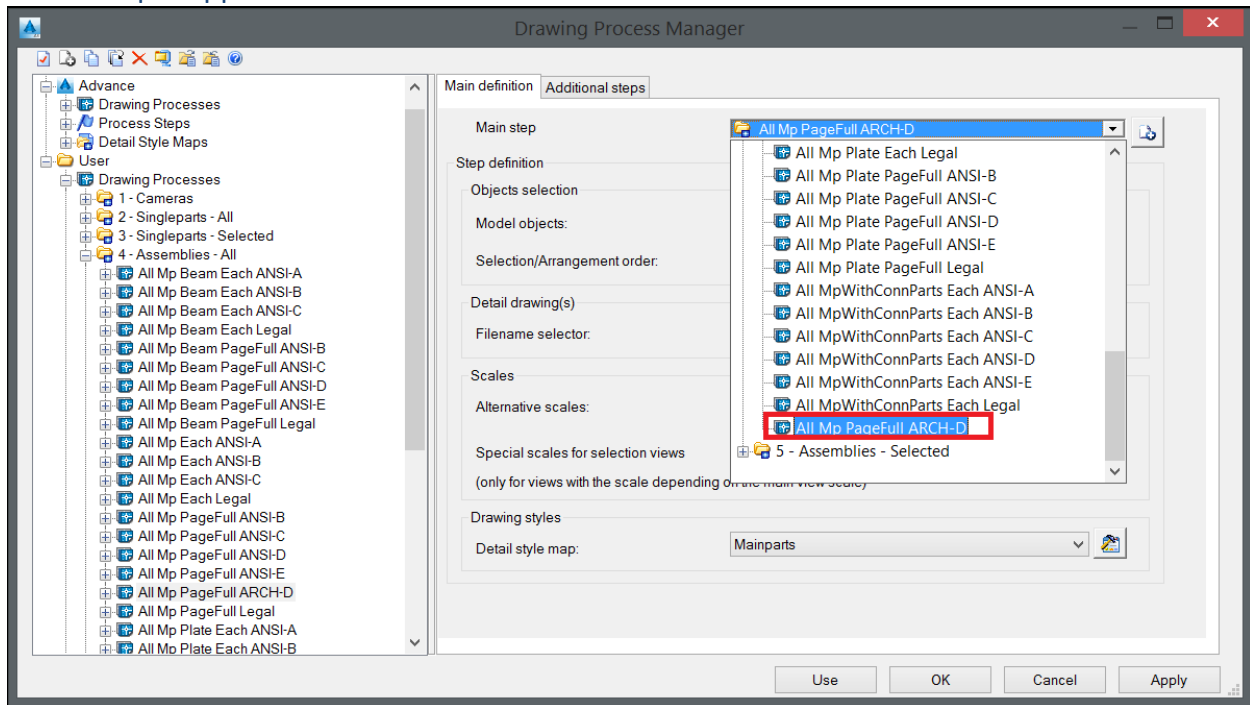


16. Select the **Main definition** tab and the **New step** icon. Rename **All Mp Page full ANSI-D** to **All Mp Page full ARCH-D**. Select **OK**.



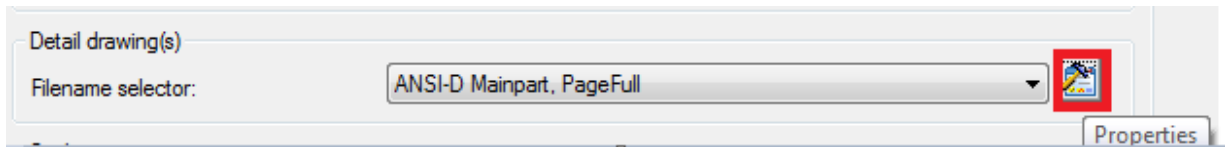
ADVANCE STEEL- 2016

A new Step is appended to the list.

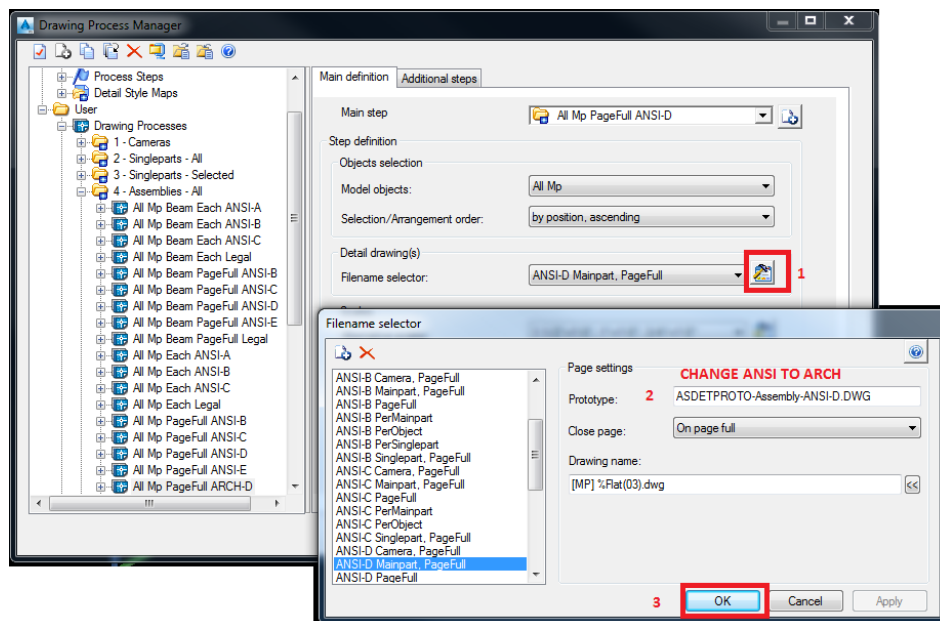


To have Advance Steel understand which process to use and bring over to the process:

Select the **Properties** icon at the end of the **File name selector**. In the Prototype field change



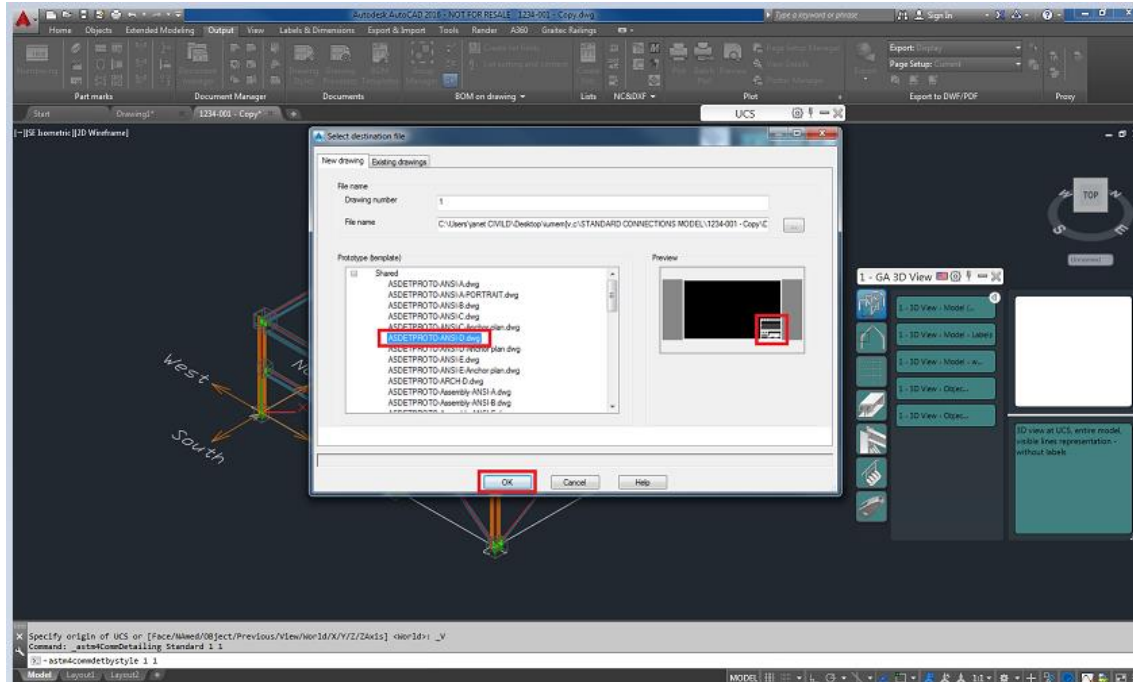
the name **ASEDEPROTO-Assembly- ANSI-D** to **ASEDEPROTO-Assembly- ARCH-D**. Select **OK**



ADVANCE STEEL- 2016

Now you are ready to use the prototype.

1. Generate a detail or 3D view and select the **ASDETPROTO-ANSI-D.dwg**
2. Select **OK**



3. Open the drawing from the Document manager. You will see the created 3D detail view with the modified **ASDETPROTO-ARCH-D.dwg**.

When you go to print you will see that the paper size has reflected the changes. See figure below.

